



6301 177-219 Mitchell Road ERSKINEVILLE NSW

1  1  1 

Ideal first home or perfect for the astute investor, this apartment features an open plan layout with a good sized kitchen, internal tree top views from the balcony and large sized bedroom. The entire apartment has been very well maintained and is located in arguably the best building in the area. Each window in the apartment is positioned to capture natural light, with views from each of them over the complex manicured gardens and facilities.

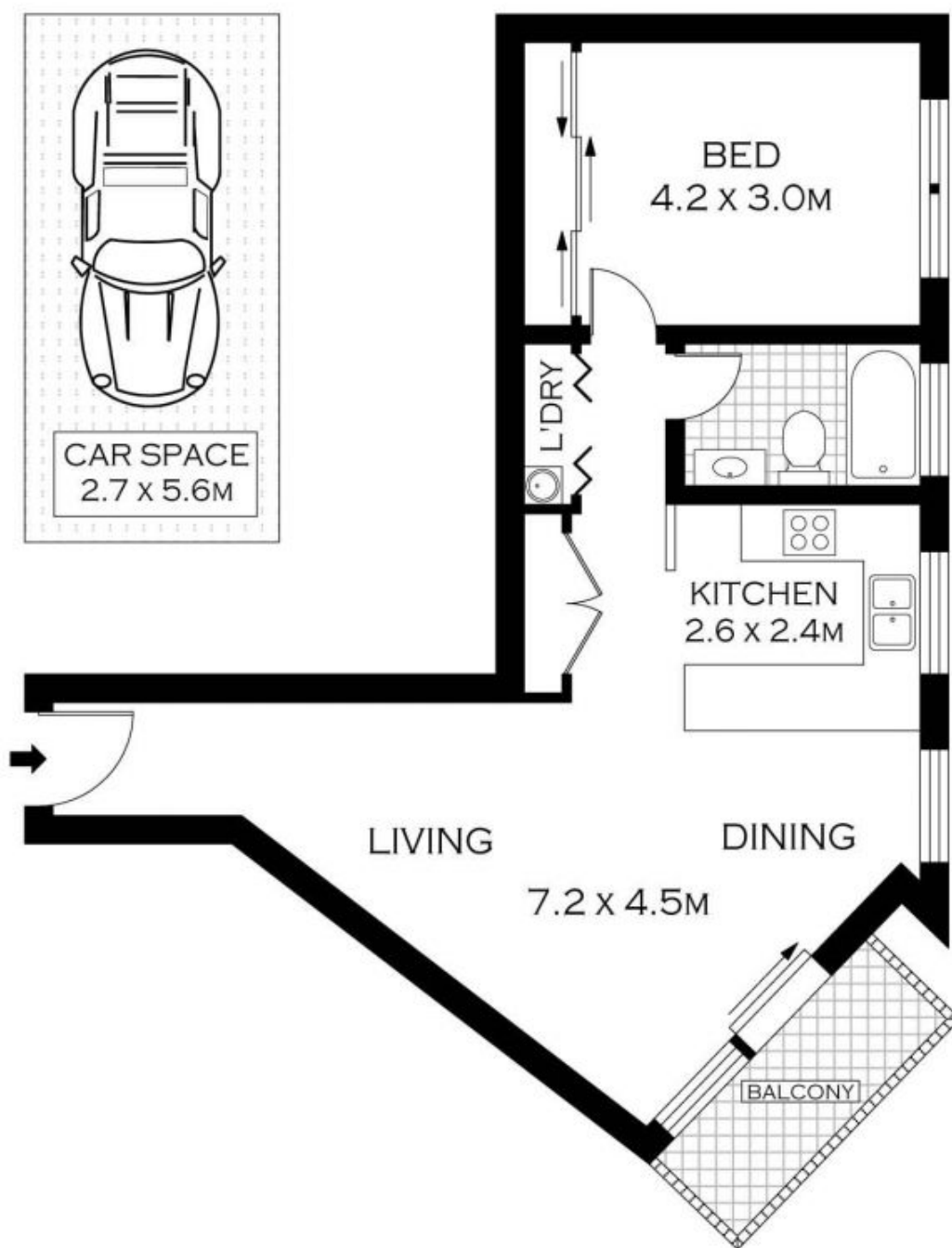
Large Bedroom with full length mirror built in wardrobe
Open Plan layout
Kitchen with gas cooking and dishwasher
Internal views from balcony
Intercom to apartment
Full access to all facilities in complex including resort style pool, onsite cafes and convenience store
Security Car space on title

Price : \$ 510,000

View : <https://www.parkproperties.com.au/sale/nsw/inner-west/erskineville/residential/apartment/1375861>



Melissah McCaffery J P
02 9565 5333



LEVEL THREE



PLANS SHOWN ONLY INDICATIVE OF LAYOUT. DIMENSIONS ARE APPROXIMATE.
Floor plans by www.realestatemarketingaustralia.com.au
Ref. No. 7280



parkproperties
(Aust) Pty Ltd

6301/177-219 MITCHELL ROAD

ERSKINEVILLE