



6508/177-219 Mitchell Road ERSKINEVILLE NSW

2  2  1 

Situated in Sydney Park Village, this bright and natural light filled apartment is the epitome of tranquillity. With a spacious open plan living/dining area and a north facing aspect, it caters to both owner occupiers and investors alike.

2 bedrooms - Main with ensuite and walk in robe, second with built in robe

Main bathroom with bathtub

Open plan living/dining equipped with air conditioning flowing from the kitchen to the balcony

Kitchen fitted with dishwasher and gas cooking

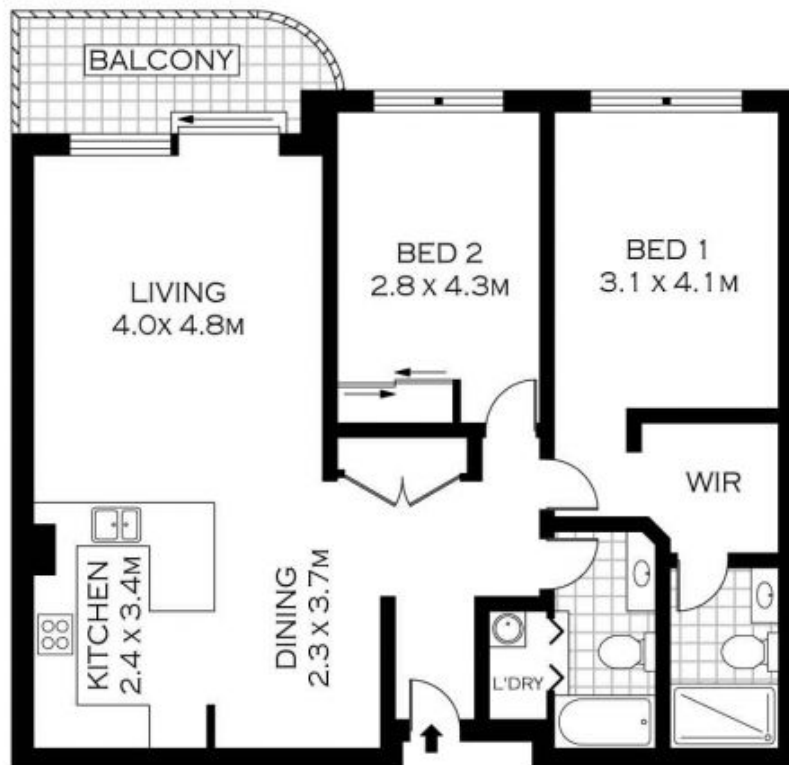
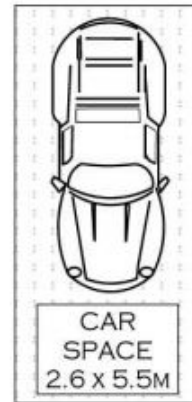
North facing balcony overlooking the lush manicured

Price : \$ 665,000

View : <https://www.parkproperties.com.au/sale/nsw/inner-west/erskineville/residential/apartment/1124116>



Melissah McCaffery J P
02 9565 5333



LEVEL FIVE



NOTE :- ONE SECURE CAR SPACE



PLANS SHOWN ONLY INDICATIVE OF LAYOUT. DIMENSIONS ARE APPROXIMATE.
Floor plans by www.realestatemarketingaustralia.com.au
Ref. No: 7005



parkproperties
(Aust) Pty Ltd

6508, 117-219 MITCHELL ROAD

ERSKINEVILLE