



3901 177-219 Mitchell Road ERSKINEVILLE NSW

2  **2**  **1** 

Located on the top floor of a popular and sought after security complex, this apartment has been freshly painted & recarpeted. Flooded with an abundance of natural light, the huge open plan living areas can play host to the grandest of furnishings leading out to a full width balcony with views of the City skyline & News Year Eve fireworks! There are two double bedrooms both with built in robes & endless views out to Botany Bay, with the master bedroom featuring ensuite. Only a stone throw from Erskineville Village and the lifestyle King Street Newtown has to offer.

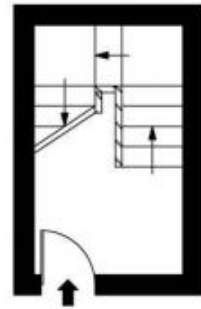
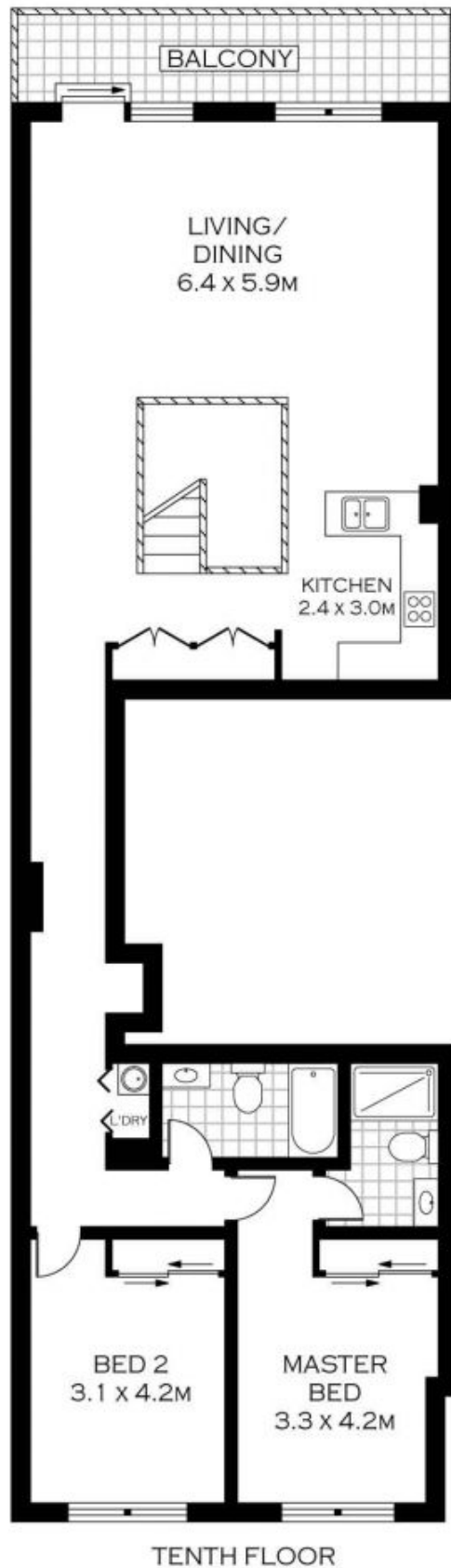
Bringing you a premium Sydney existence and located on the verge of Sydney Park's verdant open spaces and walking tracks, just 250 meters from St Peters Station and minutes from the eat streets of King and Crown Streets, Fox Studios, world-class universities, golf courses and sporting venues is Sydney Park Village.

Price : \$ 698,000

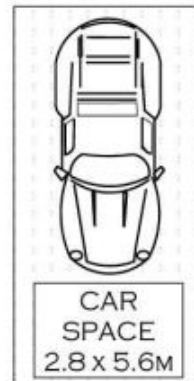
View : <https://www.parkproperties.com.au/sale/nsw/inner-west/erskineville/residential/apartment/1061931>



Melissah McCaffery J P
02 9565 5333



NINTH FLOOR
(ENTRY LEVEL)



parkproperties
(Aust) Pty Ltd



PLANS SHOWN ONLY INDICATIVE OF LAYOUT. DIMENSIONS ARE APPROXIMATE.
Floor plans by www.realestatemarketingaustralia.com.au
Ref. No. 6915

NOTE :- ONE SECURE CAR SPACE

3901 / 177-219 MITCHELL ROAD

ERSKINEVILLE