



18402/177-219 Mitchell Road ERSKINEVILLE NSW

2  **2**  **1** 

Garden views from the balcony create a superb backdrop to this modern security apartment set in the sought-after Sydney Park Village. This vibrant complex boasts resort style facilities and numerous amenities at its door. Conveniently located close to Sydney Airport, public transport links, King Street eateries and the CBD.

Price : \$ 679,000

View : <https://www.parkproperties.com.au/sale/nsw/inne-r-west/erskineville/residential/apartment/1044809>

Accommodation

2 bedrooms with built-in wardrobes, main with walk-in wardrobe and ensuite bathroom

Bright open plan living/dining area

Well presented granite kitchen with gas cooking and stainless steel appliances

Large internal balcony

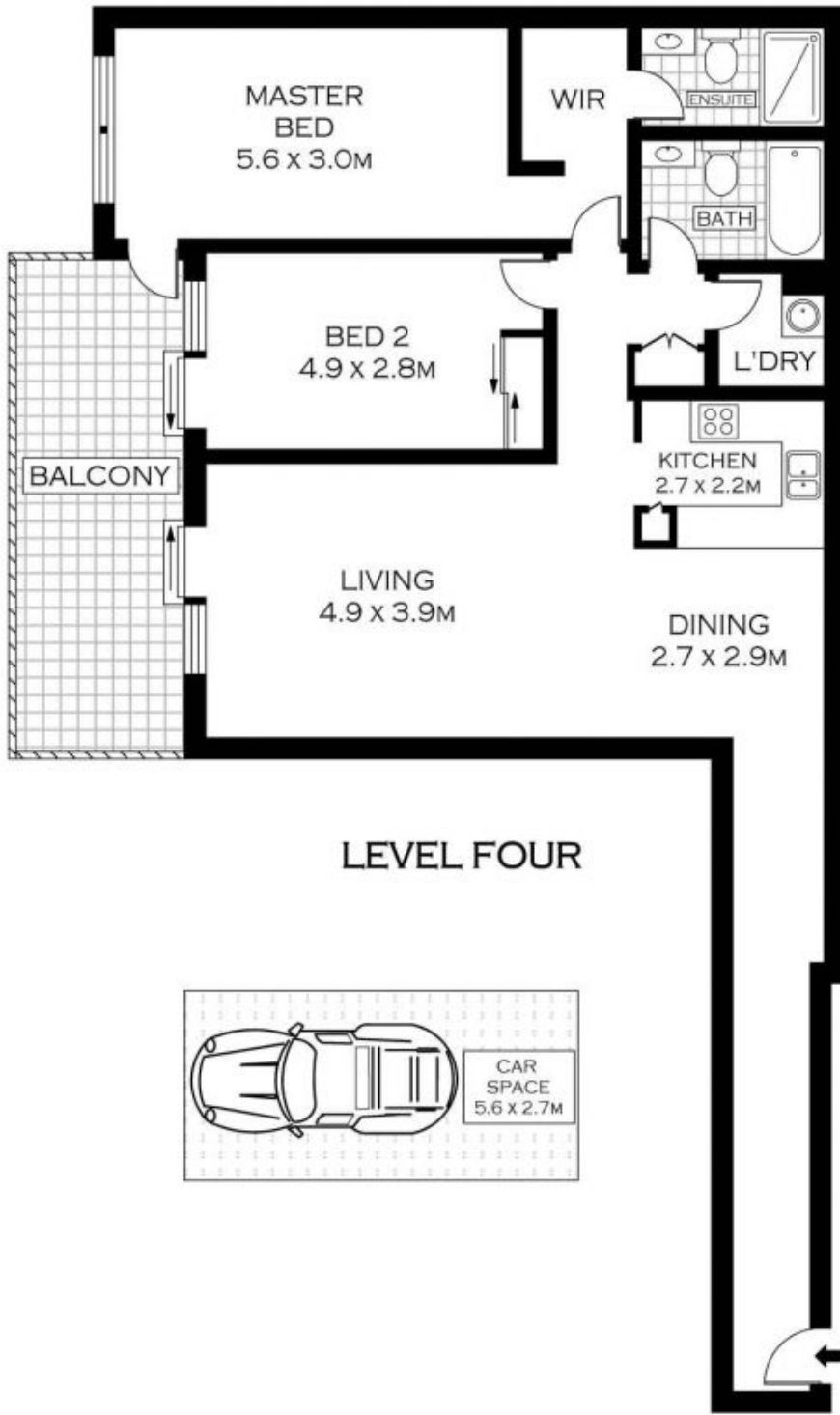
Separate laundry

Lifestyle

Indoor 25m lap pool



Melissah McCaffery J P
02 9565 5333



PLANS SHOWN ONLY INDICATIVE OF LAYOUT. DIMENSIONS ARE APPROXIMATE.
Floor plans by www.realestatemarketingaustralia.com.au
Ref. No: 6820

NOTE :- SECURE CAR SPACE



parkproperties
(Aust) Pty Ltd

18402/ 177-219 MITCHELL ROAD

ERSKINEVILLE