



**703/221-229 Sydney Park Road ERSKINEVILLE NSW**

2  2  1 

You will be impressed by the size, and district views from every room in this seventh floor apartment. Located within the tower' of Zenix this apartment has a spacious designer look and feel from the moment you step through the door. Offering two extra-large bedrooms, master with ensuite & both with built in robes & balconies. Open plan living captures views through the floor to ceiling windows, daiken air conditioning, gas kitchen with granite benches, stainless steel appliances & dishwasher. Within a well maintained security complex with the added security of Abloy locks to the front door & with beautiful gardens & resort style facilities this property will be a crowd pleaser.

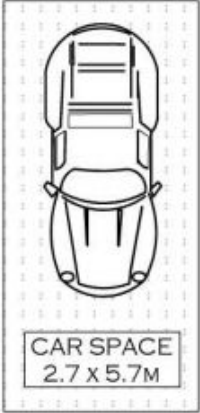
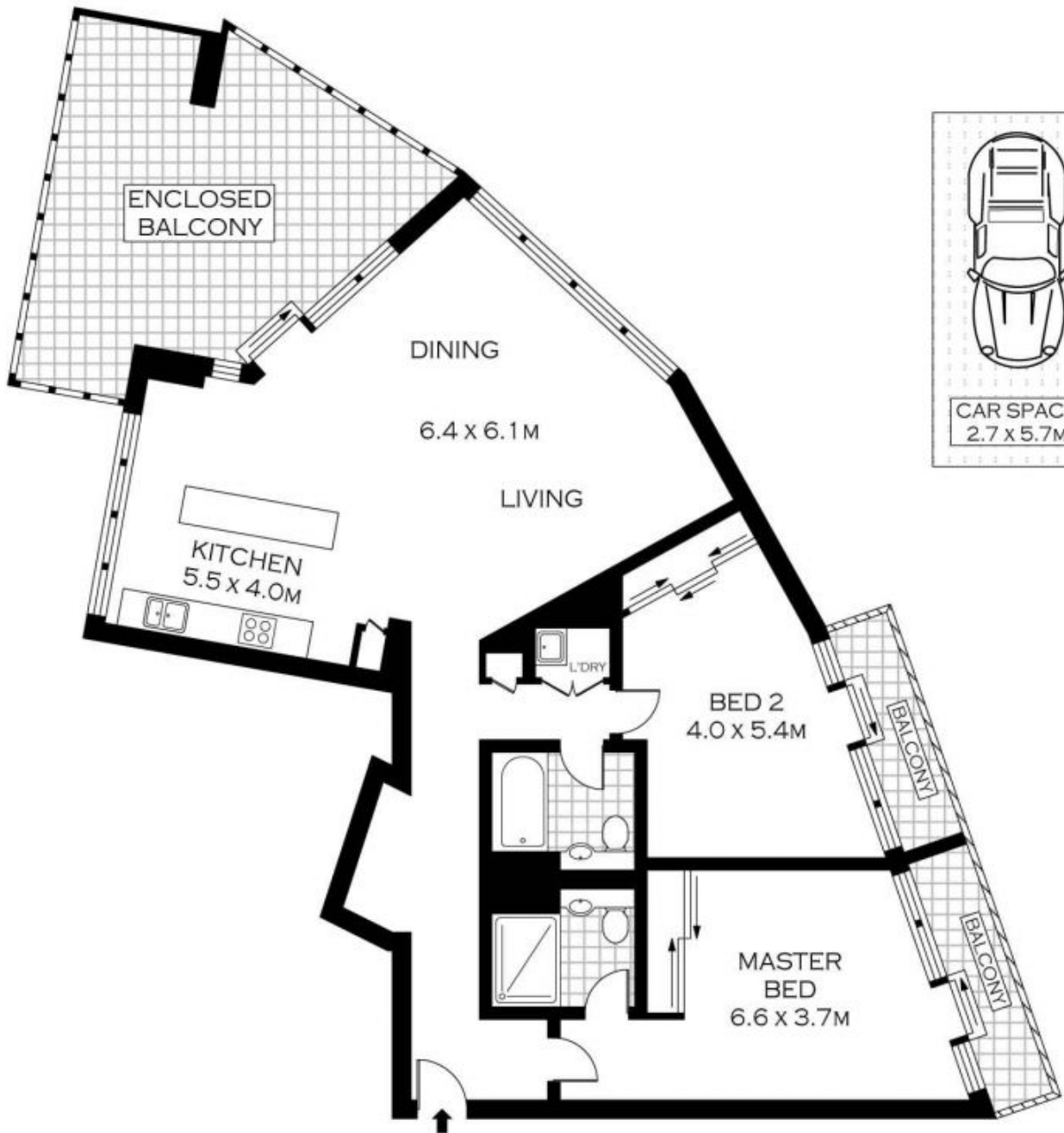
**Price** : \$ 728,000

**View** : <https://www.parkproperties.com.au/sale/nsw/inne-r-west/erskineville/residential/apartment/1037345>



**Melissah McCaffery J P**  
**02 9565 5333**

Bringing you a premium Sydney existence and located on the verge of Sydney Park's verdant open spaces and walking tracks, just 250 meters from St Peters Station and



SEVENTH FLOOR

NOTE : ONE SECURE CAR SPACE



PLANS SHOWN ONLY INDICATIVE OF LAYOUT. DIMENSIONS ARE APPROXIMATE.  
Floor plans by [www.realestatemarketingaustralia.com.au](http://www.realestatemarketingaustralia.com.au)  
Ref. No: 6837



parkproperties  
(Aust) Pty Ltd

703/211 SYDNEY PARK ROAD

ERSKINEVILLE