



6512/177-219 Mitchell Road ERSKINEVILLE NSW

2  2  1 

With a private leafy outlook, this 5th floor apartment has a well-designed floor plan & will attract owner occupiers & investors who enjoy the resort style facilities & the convenience to Erskineville that Sydney Park Village offers.

Accommodation

Two double bedrooms, main with walk in wardrobe & ensuite

Open plan lounge and dining area with air conditioning, access to the balcony

Large gas kitchen with dishwasher, & breakfast bar

Main bathroom with bath and internal laundry with dryer

Security car space

Close to transport, amenities and entertainment

Lifestyle:

+ Indoor 25m lap pool

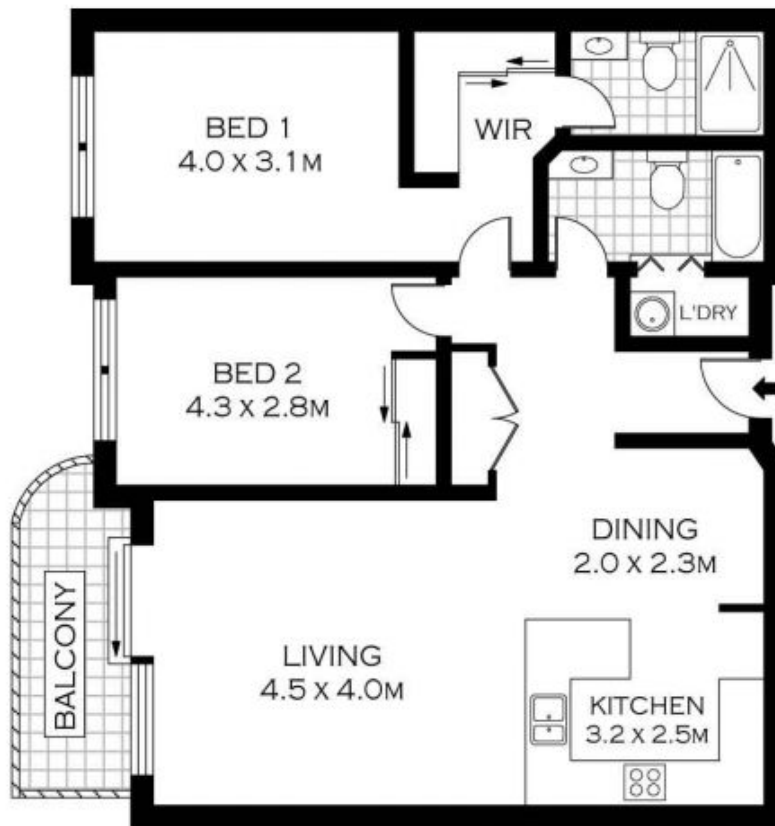
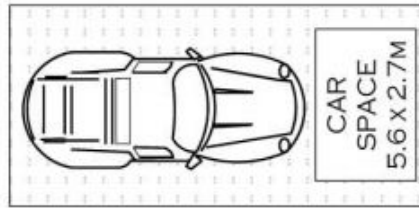
+ Indoor gym

Price : \$ 620,000

View : <https://www.parkproperties.com.au/sale/nsw/inne-r-west/erskineville/residential/apartment/1022935>



Melissah McCaffery J P
02 9565 5333



FIFTH FLOOR

NOTE : ONE SECURE CAR SPACE



PLANS SHOWN ONLY INDICATIVE OF LAYOUT. DIMENSIONS ARE APPROXIMATE.
Floor plans by www.realestatemarketingaustralia.com.au
Ref. No. 6790



parkproperties
[Aust] Pty Ltd

6512/177-219 MITCHELL ROAD

ERSKINEVILLE