



**365/221-229 Sydney Park Road ERSKINEVILLE NSW**

1  1  1 

Contemporary one bedroom apartment within the well known Zenix complex. Offering a modern granite kitchen with stainless steel appliances & dishwasher, open plan living leading out to a full length balcony, large bedroom with built in robe & access to balcony, internal laundry, well proportioned bathroom with tub & highly prized off street parking.

**Price** : \$ 525,000

**View** : <https://www.parkproperties.com.au/sale/nsw/inne-r-west/erskineville/residential/apartment/1021405>

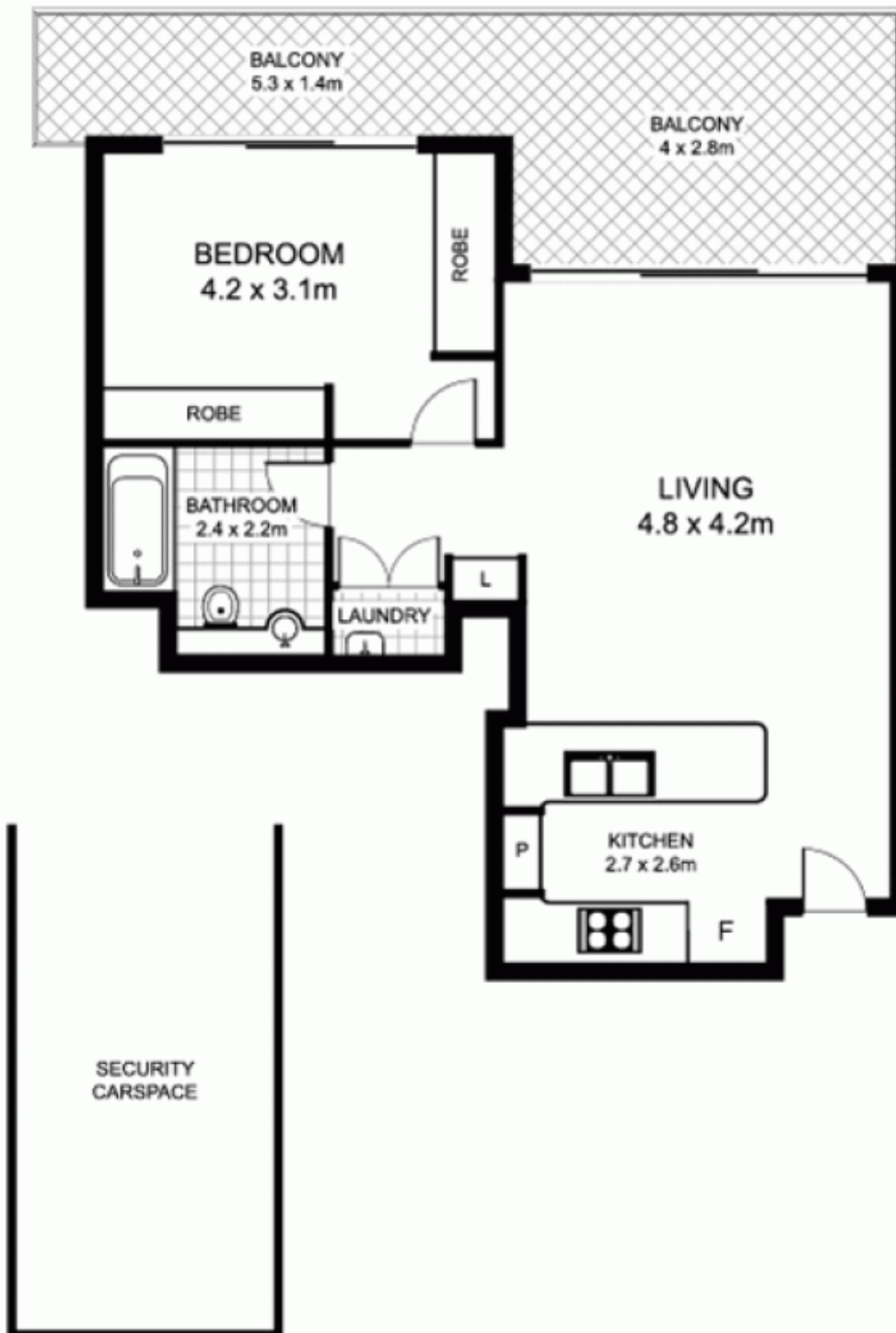
With access to resort style facilities including pool, gym, tennis court this apartment ticks every box for first home owners & astute investors.



**Melissah McCaffery J P**  
**02 9565 5333**

Disclaimer: Park Properties (Aust) Pty Ltd believes that this information is correct but does not warrant or guarantee the accuracy of the information. Certain information may have been obtained from external sources and may not have been...show more independently verified. You should make

# 365/221 Sydney Park Road, ERSKINEVILLE



Plans by  
**surroundpix**  
com.au  
1300 30 32 40

This floor plan is intended as a guide only. Layout dimensions are approximate only. No representations or warranties of any nature whatsoever are given or intended. Any person using this information should rely on their own enquiries.