



7201/177-219 Mitchell Road ERSKINEVILLE NSW

2  2  1 

Well-presented second floor light filled apartment is located in the resort style Sydney Park Village. With no road frontage this apartment is a must to view. Currently in original condition, this property offers its new owner the opportunity to personalise and make their own!

Price : \$ 631,000

View : <https://www.parkproperties.com.au/sale/nsw/inne-r-west/erskineville/residential/apartment/1013970>

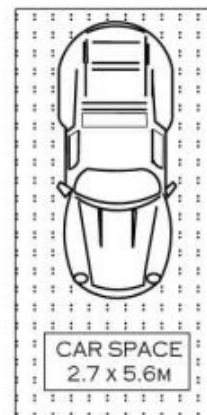
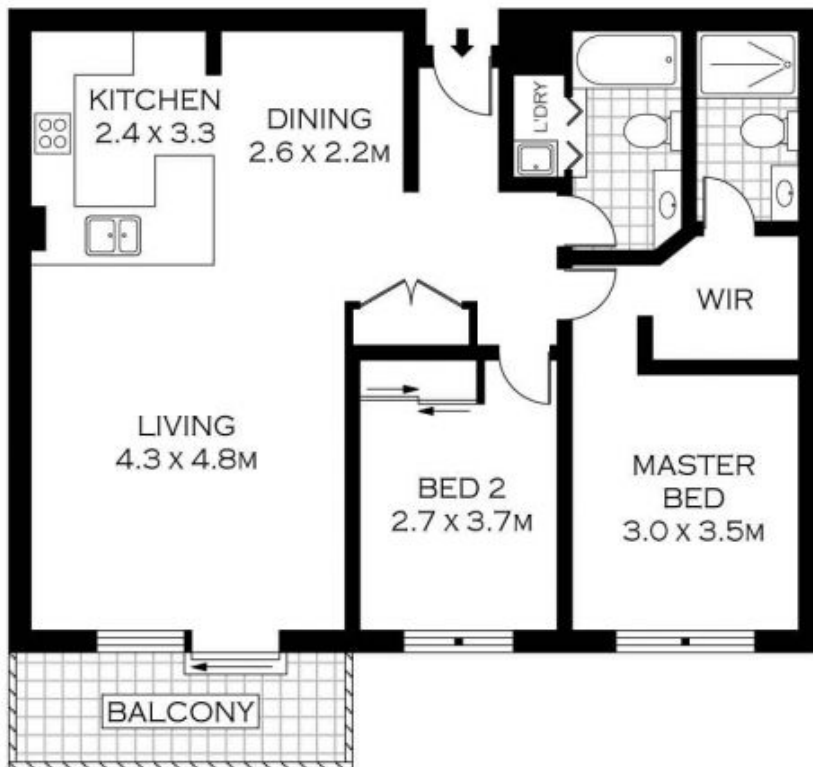
- * 2 double bedrooms, master with walk in robe & ensuite
- * Main bathroom with tub & internal laundry facilities
- * Large gas kitchen with dishwasher, and breakfast bar
- * Spacious living with defined lounge and dining areas
- * Private balcony with no street frontage
- * The perfect start for first home owners or investors.

Lifestyle:

- + Indoor 25m lap pool
- + Indoor gym
- + Outdoor swimming pool



Melissah McCaffery J P
02 9565 5333



FIRST FLOOR



PLANS SHOWN ONLY INDICATIVE OF LAYOUT. DIMENSIONS ARE APPROXIMATE.
 Floor plans by www.realestatemarketingaustralia.com.au
 Ref. No. 6758


 NOTE :- ONE SECURE CAR SPACE



7201 / 177-219 MITCHELL ROAD

ERSKINEVILLE